

GENERAL NOTES:

1. ALL FIRE PROTECTION WORKS HEREIN INCLUDED SHALL BE EXECUTED AND INSTALLED IN ACCORDANCE WITH THE LATEST REQUIREMENT OF THE PHILIPPINE NATIONAL BUILDING CODE, FIRE PROTECTION CODE OF THE PHILIPPINES, NFPA 13 AND THE LOCAL REGULATIONS
2. THE CONTRACTOR SHALL DETERMINE THE EXACT LOCATION OF SPRINKLER IN COORDINATION WITH THE ARCHITECTURAL CEILING LAYOUT.
3. MINIMUM PIPE SIZE FOR ALL SPRINKLER SHALL BE 25mm Ø UNLESS OTHERWISE SPECIFIED.
4. WORKMANSHIP. THE WORK THROUGHOUT SHALL BE EXECUTED IN THE BEST AND MOST THOROUGH MANNER KNOWN TO TRADE AND TO THE SATISFACTION OF THE ARCHITECT AND THE ENGINEER.
5. ALL SHOP DRAWING, PRODUCT DATA SUBMITTALS, SAMPLES, REVISIONS OR ANY OTHER INFORMATION, ARE TO BE SUBMITTED AND PRESENTED TO THE OWNER OR HIS REPRESENTATIVE AND CONSULTANTS FOR APPROVAL PRIOR TO IMPLEMENTATION.
6. ALL PIPE SIZE ARE IN mm UNLESS OTHERWISE NOTED.
7. THE CONTRACTOR SHALL BE RESPONSIBLE FOR SECURING ALL GOVERNMENT CONSTRUCTION AND OPERATION PERMITS, AND SHALL PAY ALL REQUIRED FEES.
8. THE SPRINKLER HEADS PROVIDED ARE RATED AT 165 DEG. F OR 74 DEG. C FOR ORDINARY ROOM TEMPERATURES SHOULD THERE BE OTHER EQUIPMENT INSTALLED THAT EMIT HEAT MAKING THE ROOM TEMPERATURE HIGHER THAN ORDINARY, THE SPRINKLER HEADS THEREIN MUST BE REPLACED WITH HEADS RATED 212 DEG. F OR 100 DEG. C.
9. LIGHTING FIXTURES AND AIR DUCT DIFFUSERS SHALL BE INSTALLED AWAY FROM THE SPRINKLER HEADS. THE MINIMUM DISTANCE PERMITTED BETWEEN LIGHT AND SPRINKLER SHALL BE 300mm.
10. SPRINKLER PIPING IN THE CEILING MUST NOT BE USED FOR ATTACHING HANGERS FOR ANY EQUIPMENT, FIXTURES, FURNITURE, AND CEILING ACCESSORIES.

NOTES:

REFER TO APPROPRIATE SURVEY, STRUCTURAL, MECHANICAL, ELECTRICAL, LANDSCAPE, ETC. CONSULTANT DRAWINGS BEFORE PROCEEDING WITH THE WORK.

CONSTRUCTION MUST CONFORM TO ALL APPLICABLE CODES AND REQUIREMENTS OF AUTHORITIES HAVING JURISDICTION.

THE CONTRACTOR WORKING FROM DRAWINGS NOT SPECIFICALLY MARKED "FOR CONSTRUCTION" MUST ASSUME FULL RESPONSIBILITY AND BEAR COSTS FOR ANY CORRECTIONS OR DAMAGES RESULTING FROM HIS WORK.

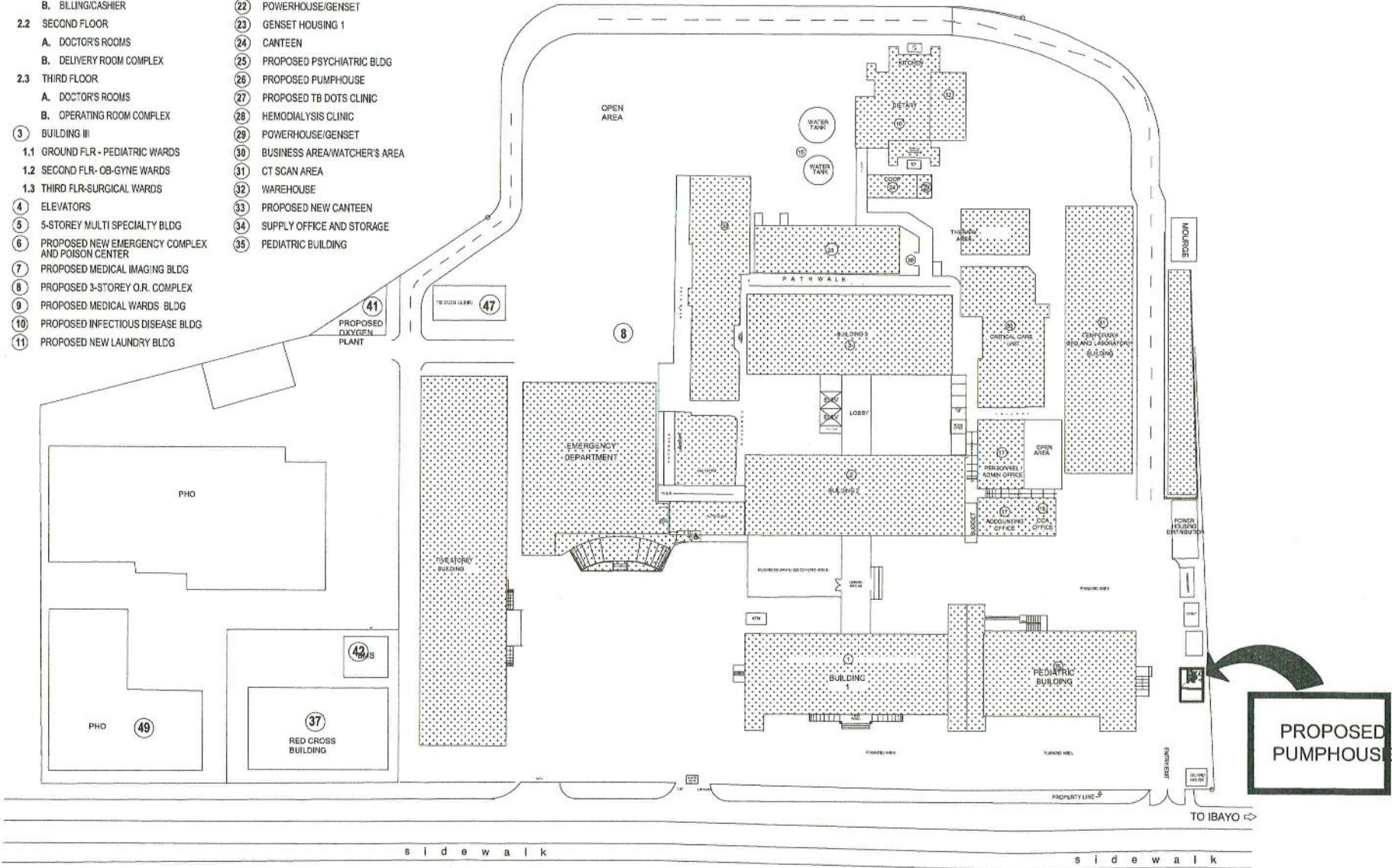
THE CONTRACTOR SHALL VERIFY AND ACCEPT RESPONSIBILITY FOR ALL DIMENSIONS AND CONDITIONS ON SITE AND SHALL NOTIFY THE APPROPRIATE CONSULTANT OF ANY VARIATIONS FROM THE SUPPLIED INFORMATION.

IN CASE OF DISCREPANCY IN THE FIGURES OR DRAWINGS OR SPECIFICATIONS, THE MATTER SHALL BE SUBMITTED IMMEDIATELY TO APPROPRIATE CONSULTANT FOR VERIFICATION. ANY WORK OR CORRECTION INVOLVING SUCH DISCREPANCY SHALL BE DONE AT THE CONTRACTOR'S RISK.

THE CONTRACTOR MUST SUBMIT, AHEAD OF SCHEDULE APPROPRIATE SHOP DRAWINGS PRIOR TO FABRICATION, ERECTION AND INSTALLATION OF ANY ITEMS IN THE CONSTRUCTION.

LEGEND

- 1 BUILDING I
1.1 GROUND FLR - PRIVATE ROOMS
1.2 SECOND FLR- WARDS
1.3 THIRD FLR- WARDS
- 2 BUILDING II
2.1 GROUND FLOOR
A. MEDICAL CENTER CHIEF
B. CHIEF OF PROFESSIONAL MEDICAL STAFF
C. CHIEF NURSE
A. IHOMPHARMACY
B. BILLING/CASHIER
2.2 SECOND FLOOR
A. DOCTOR'S ROOMS
B. DELIVERY ROOM COMPLEX
2.3 THIRD FLOOR
A. DOCTOR'S ROOMS
B. OPERATING ROOM COMPLEX
- 3 BUILDING III
1.1 GROUND FLR - PEDIATRIC WARDS
1.2 SECOND FLR- OB-GYN WARDS
1.3 THIRD FLR- SURGICAL WARDS
- 4 ELEVATORS
5 5-STOREY MULTI SPECIALTY BLDG
6 PROPOSED NEW EMERGENCY COMPLEX AND POISON CENTER
7 PROPOSED MEDICAL IMAGING BLDG
8 PROPOSED 3-STOREY O.R. COMPLEX
9 PROPOSED MEDICAL WARDS BLDG
10 PROPOSED INFECTIOUS DISEASE BLDG
11 PROPOSED NEW LAUNDRY BLDG
- 12 PROPOSED DRYING AREA
13 SEWERAGE TREATMENT PLANT
14 PROPOSED MOTORPOOL/ENGINEERING BLDG
15 ELEVATED WATER TANK
16 DIETARY BUILDING
17 ACCOUNTING/PERSONNEL
18 INTENSIVE CARE UNIT
19 OPD RECORDS
20 BAC OFFICE
21 PROPOSED TB WARDS BLDG
22 POWERHOUSE/GENSET
23 GENSET HOUSING 1
24 CANTEN
25 PROPOSED PSYCHIATRIC BLDG
26 PROPOSED PUMPHOUSE
27 PROPOSED TB DOTS CLINIC
28 HEMODIALYSIS CLINIC
29 POWERHOUSE/GENSET
30 BUSINESS AREA/WATCHER'S AREA
31 CT SCAN AREA
32 WAREHOUSE
33 PROPOSED NEW CANTEN
34 SUPPLY OFFICE AND STORAGE
35 PEDIATRIC BUILDING
- 36 WASH AREA
37 RED CROSS BUILDING
38 MEDICAL AND ISOLATION WARD
39 MORGUE
40 PHYSICAL THERAPY/REHAB CLINIC
41 PROPOSED OXYGEN PLANT
42 BMS BUILDING
43 PROPOSED WASTE HOLDING AREA
- 44 PROPOSED WASTE TREATMENT AREA
45 PROPOSED NEW WAREHOUSE
46 PROPOSED PARKING AREA
47 PROPOSED NEW TB DOTS CLINIC
48 PROPOSED CANCER CENTER
49 PROPOSED RECEPTION AREA
50 CRITICAL CARE UNIT
51 TEMPORARY OPD AND LABORATORY



SITE DEVELOPMENT PLAN
SCALE N T S

ABBREVIATIONS

DSPR DRY STANDPIPE RISER	CV CHECK VALVE
WSPR WET STANDPIPE RISER	ACV ALARM CHECK VALVE
ITC INSPECTOR'S TEST CONNECTION	PRV PRESSURE RELIEF VALVE
CM CROSSMAIN	FV FLOAT VALVE
FM FEEDMAIN	RN RISER NIPPLE
JP JOCKEY PUMP	FHV FIRE HOSE VALVE
FP FIRE PUMP	FHC FIRE HOSE CABINET
TP TRANSFER PUMP	FE FIRE EXTINGUISHER
GV GATE VALVE	

PORTABLE FIRE EXTINGUISHER SCHEDULE

MARK	QTY	DESCRIPTION	REMARKS
FE-01	06	10 LBS (4.5 KG.) DRY CHEMICAL ABC FIRE EXTINGUISHER	UL/FM APPROVED

SCHEDULE OF FIRE HOSE CABINET

MARK	QTY	DESCRIPTION	FIRE HOSE					REMARKS
			DIAMETER (mm)	LENGTH (m)	L(mm)	W(mm)	H(mm)	
FHC	03	FIRE HOSE CABINET: 27"x32"x7" SURFACED/RECESSED TYPE STEEL BODY USING B11 SHEET GAUGE 18 BODY PAINTED WITH EPOXY PRIMER GRAY & FINISHED WITH AUTOMOTIVE RED PAINT WITH ALUMINUM FRAME USING YS221 AND TUBULAR 1x1 WITH LOCK & KEY PIANO HINGES USED FOR DOOR WITH SEMI-AUTOMATIC HOSE RACK STICKER & 1/8 CLEAR GLASS ISE FOR FRONTAGE.	40	30	700	180	815	LOCALLY FABRICATED & MANUFACTURED BY "ANAKO" OR APPROVED EQUAL FHC CLASS II



REPUBLIC OF THE PHILIPPINES
PROVINCE OF BATAAN
BATAAN GENERAL HOSPITAL
BALANGA CITY, BATAAN
ENGINEERING AND FACILITIES

FIRE PROTECTION SYSTEM

PREPARED BY:
EDWIN PANLAQUIN II
ENGINEER IV
REG NO.:
PLACE:

CHECKED BY:
JOHN DARRYL M. SANTOS
ENGINEER IV
REG NO.:
PLACE:

MYRNA VAMAGAT

DR. GILBERT B. BALTAZAR



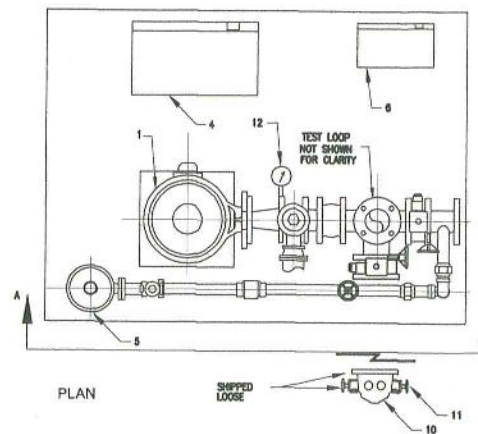
EQUIPMENT SCHEDULE												
MARK	QTY.	SERVICE	TYPE	LOCATION	PUMP RATING			MOTOR RATING			REMARKS	
					CAPACITY (GPM)	TDH (FT)	RPM	HP	VOLTS	PH		HERTZ
FP-1	1	FIRE PUMP (DUTY)	VERTICAL TURBINE TYPE	PUMP ROOM	500	300	3650	60.0	230	3	60	VERTICAL TURBINE PUMP SHALL BE COMPLETE WITH DISCHARGE HEAD ASSEMBLY, AIR RELEASE, PRESSURE GAUGE, COUPLED TO AN ELECTRIC MOTOR 1/2 HP ENCLOSURE 445TP FRAME & OTHER STANDARD ACCESSORIES. THE PUMP SHALL DELIVER 150% OF RATED CAPACITY AT A PRESSURE OF NOT LESS THAN 60% OF THE RATED PRESSURE. UL/FM APPROVED. FIRE PUMP SHALL BE CONNECTED LOAD TO THE EMERGENCY GENERATOR.
JP-1	1	JOCKEY PUMP (DUTY)	SUBMERSIBLE PUMP	PUMP ROOM	50	320	3650	5.0	230	3	60	SUBMERSIBLE CENTRIFUGAL PUMP, ELECTRIC DRIVEN MOTOR, COMPLETE WITH STANDARD ACCESSORIES. UL/FM APPROVED. JOCKEY PUMP SHALL BE CONNECTED LOAD TO THE EMERGENCY GENERATOR. ENCLOSURE SHALL BE AS PER MANUFACTURER RECOMMENDATION
FPC-1	1	CONTROLLER (DUTY)	-	PUMP ROOM	-	-	-	-	230	3	60	FIRE PUMP CONTROLLER SHALL BE WYE DELTA REDUCED VOLTAGE STARTING OPEN DURING TRANSITION FROM START TO RUN. CONTROLLERS SHALL BE FLOOR MOUNTED ON NEMA TYPE 4 ENCLOSURE TO INCLUDE PUMP OPERATING PILOT LIGHTS, PUMP FAIL TO START, PUMP OVER-LOAD, ALARMS, TEST TIMER WITH SOLENOID VALVE. UL/FM APPROVED.
JPC-1	1	CONTROLLER (DUTY)	-	PUMP ROOM	-	-	-	-	230	3	60	JOCKEY PUMP CONTROLLER SHALL INCLUDE THE CIRCUIT BREAKER, OVER LOAD RELAY, PRESSURE SWITCH, RUNNING PERIOD TIMER, ALL NEMA TYPE ENCLOSURE, PRESSURE RECORDER, POWDER ON PILOT LIGHTS AND OTHER ACCESSORIES. UL/FM APPROVED.

VERTICAL TURBINE PUMP SHALL BE COMPLETE WITH DISCHARGE HEAD ASSEMBLY, AIR RELEASE, PRESSURE GAUGE, COUPLED TO AN ELECTRIC MOTOR W/ WPI ENCLOSURE 445TP FRAME & OTHER STANDARD ACCESSORIES. THE PUMP SHALL DELIVER 150% OF RATED CAPACITY AT A PRESSURE OF NOT LESS THAN 60% OF THE RATED PRESSURE. UL/FM APPROVED. FIRE PUMP SHALL BE CONNECTED LOAD TO THE EMERGENCY GENERATOR.

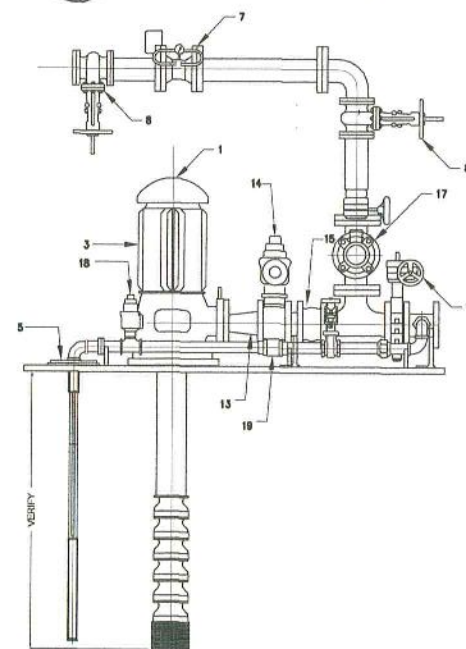
SUBMERSIBLE CENTRIFUGAL PUMP, ELECTRIC DRIVEN MOTOR, COMPLETE WITH STANDARD ACCESSORIES. UL/FM APPROVED. JOCKEY PUMP SHALL BE CONNECTED LOAD TO THE EMERGENCY GENERATOR. ENCLOSURE SHALL BE AS PER MANUFACTURER RECOMMENDATION.

FIRE PUMP CONTROLLER SHALL BE WYE DELTA REDUCED VOLTAGE STARTING OPEN DURING TRANSITION FROM START TO RUN. CONTROLLERS SHALL BE FLOOR MOUNTED ON NEMA TYPE 4 ENCLOSURE TO INCLUDE PUMP OPERATING PILOT LIGHTS, PUMP FAIL TO START, PUMP OVER-LOAD, ALARM, TEST TIMER WITH SOLENOID VALVE. UL/FM APPROVED.

JOCKEY PUMP CONTROLLER SHALL INCLUDE THE CIRCUIT BREAKER, OVER LOAD RELAY, PRESSURE SWITCH, RUNNING PERIOD TIMER. ALL NEMA TYPE ENCLOSURE, PRESSURE RECORDER, POWDER ON PILOT LIGHTS AND OTHER ACCESSORIES. UL/FM APPROVED.

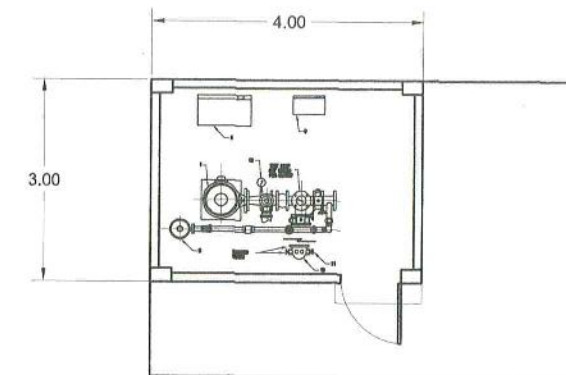


EQUIPMENT LAYOUT
SCALE NTS

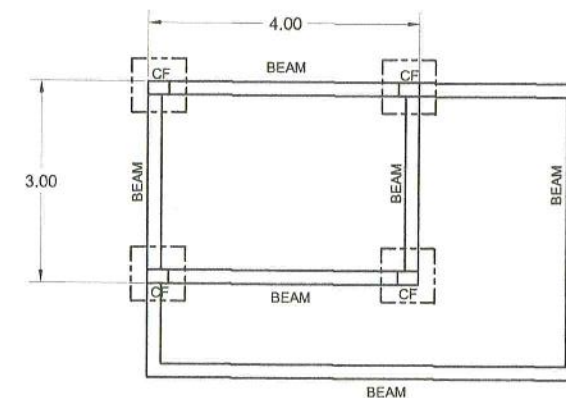


SECTION
SCALE NTS

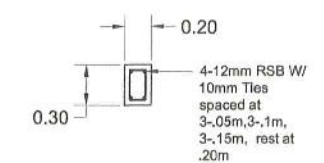
NO.	EQUIPMENT DESCRIPTION	
1	FIRE PUMP	11 HOSE VALVE
2	COUPLING (GUARD NOT SHOWN)	12 DISCHARGE PRESSURE GAUGE
3	DRIVER	13 CONCENTRIC INCREASER
4	CONTROL PANEL (FIREPUMP)	14 MAIN RELIEF VALVE WITH WASTE CONE
5	JOCKEY PUMP	15 WAFER CHECK VALVE
6	CONTROL PANEL (JOCKEY PUMP)	16 BUTTERFLY VALVE (DISCHARGE SIDE)
7	FLOWMETER	17 BUTTERFLY VALVE (HOSE HEADER)
8	OS & Y GATE VALVE	18 RELIEF VALVE (JOCKEY PUMP LINE)
9	ECCENTRIC REDUCER	19 CHECK VALVE (JOCKEY PUMP LINE)
10	HOSE HEADER	



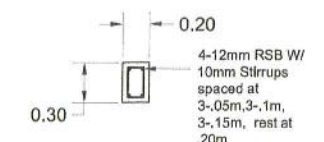
PUMPHOUSE PLAN
SCALE 1:100



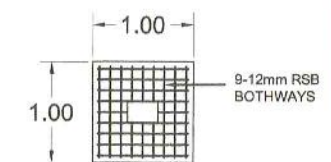
FOUNDATION PLAN
SCALE 1:100



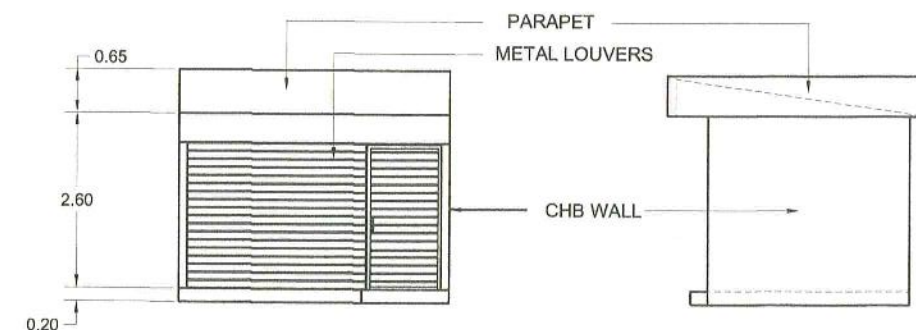
COLUMN DETAILS



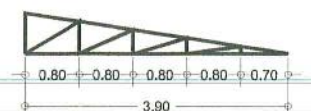
BEAM/ROOF BEAM DETAILS



FOOTING DETAILS

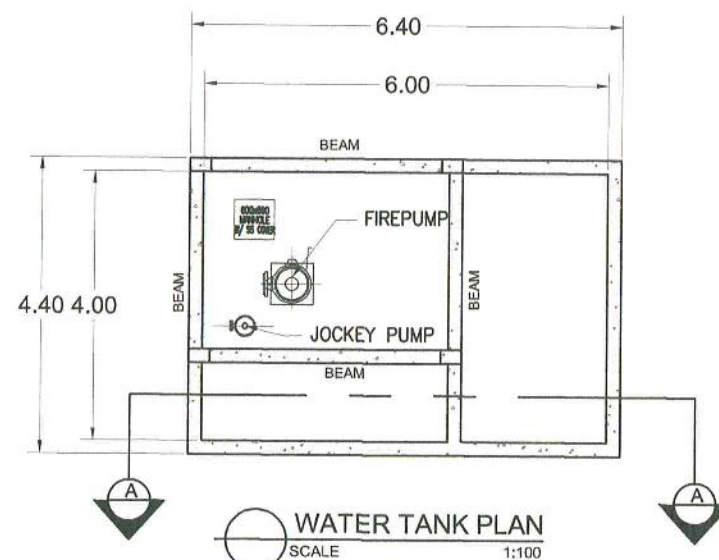


ELEVATION
SCALE 1:100

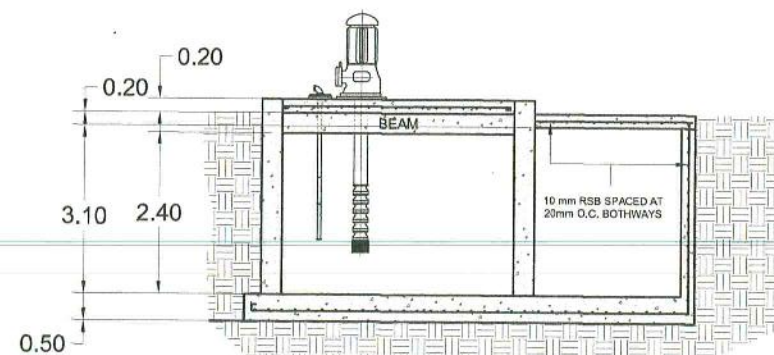


TRUSS

ROOF PLAN
SCALE 1:100



WATER TANK PLAN
SCALE 1:100



SECTION THRU A-A
SCALE 1:100



REPUBLIC OF THE PHILIPPINES
PROVINCE OF BATAAN
BATAAN GENERAL HOSPITAL
BALANGA CITY, BATAAN
ENGINEERING AND FACILITIES
MANAGEMENT SECTION

PROJECT TITLE:

FIRE PROTECTION SYSTEM

PREPARED BY:

EDWIN PANLAQUI II
ENGINEER II

REG. NO.:
PTR. NO.:
DATE:

CHECKED BY:

JOHN DARRYL M. SARTOS
ENGINEER IV

REG. NO.:
PTR. NO.:
DATE:

RECOMMENDING APPROVAL:

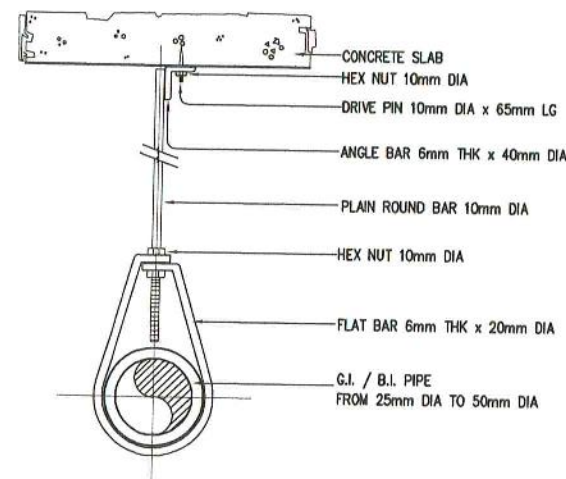
MYRNA V. MAGAT
CHIEF ADMINISTRATIVE OFFICER

APPROVED BY:

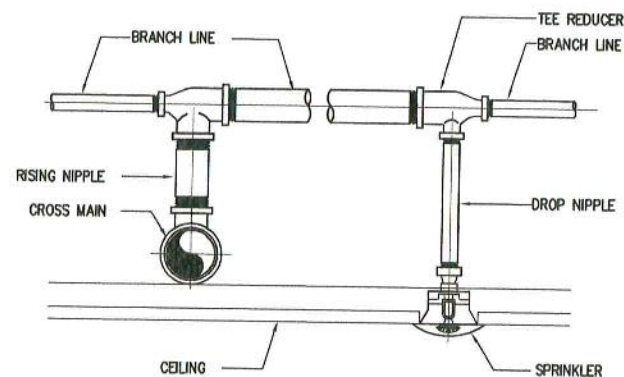
DR. GLORY V. BALTAZAR
MEDICAL CENTER CHIEF II

SHEET NO:

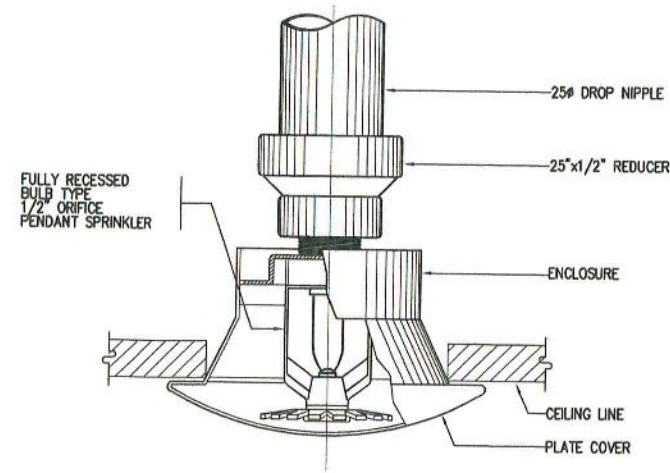
FP
2 8



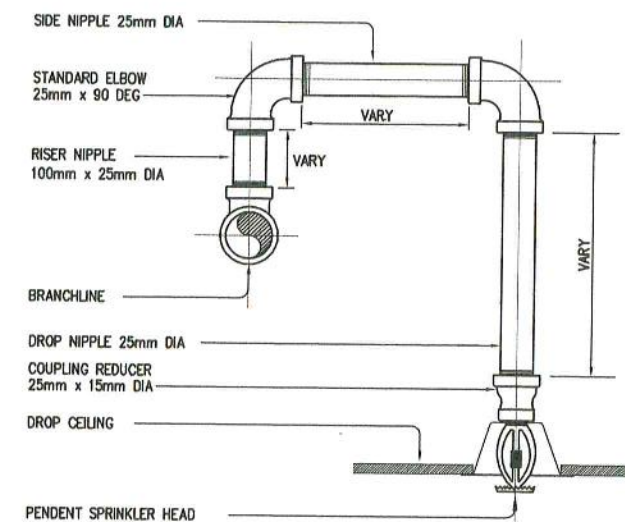
BRANCH PIPE HANGER DETAIL
SCALE N T S



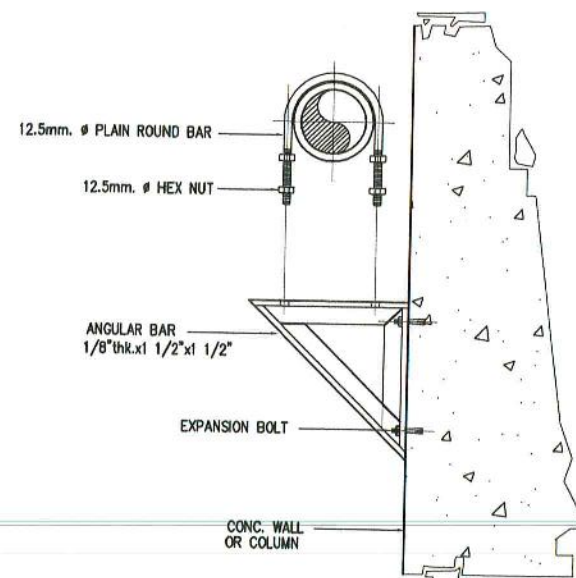
TYPICAL CROSSMAIN/ BRANCH LINE CONNECTION
SCALE N T S



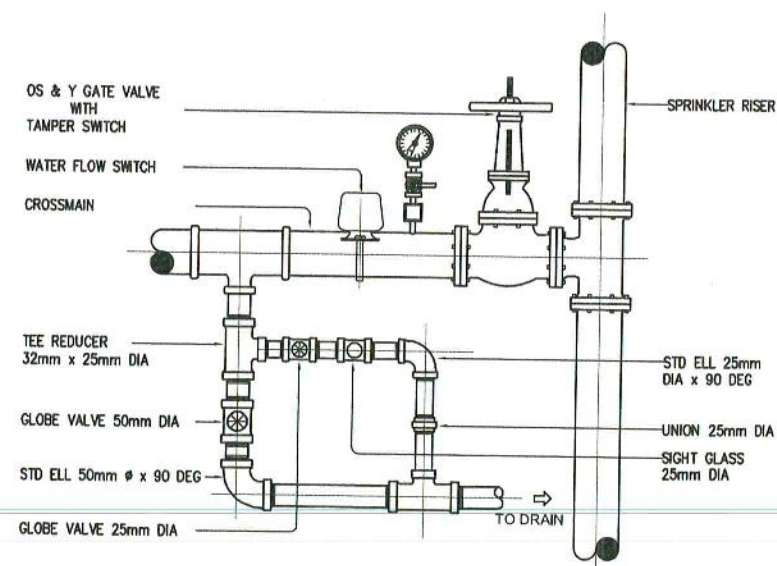
TYPICAL SPRINKLER HEAD DETAIL
SCALE N T S



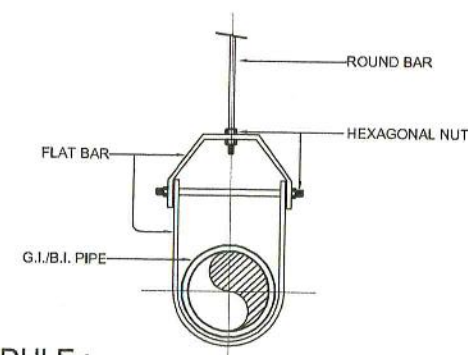
PENDENT CONNECTION DETAIL
SCALE N T S



CROSS MAIN PIPE BRACKET DETAIL
SCALE N T S



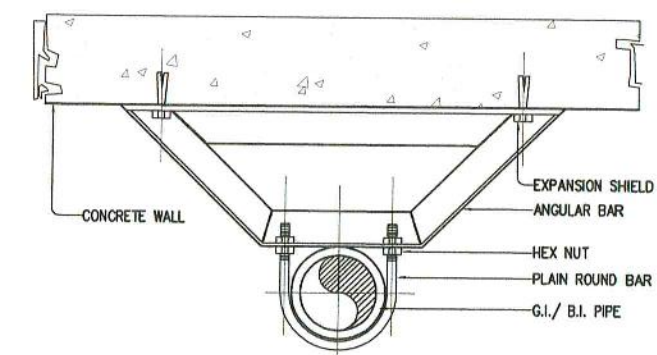
RISER & FEEDMAIN CONNECTION DETAIL
SCALE N T S



SCHEDULE :

PIPE SIZE	FLAT BAR	ROUND BAR	EXP. SHIELD
80 MM.	4 MM. X 25 MM.	15 MM.	15 MM. X 50 MM.
100 MM.	4 MM. X 25 MM.	15 MM.	15 MM. X 50 MM.
125 MM.	4 MM. X 40 MM.	15 MM.	15 MM. X 60 MM.
150 MM.	4 MM. X 40 MM.	15 MM.	15 MM. X 60 MM.

CLEVIS PIPE HANGER DETAIL
SCALE N T S

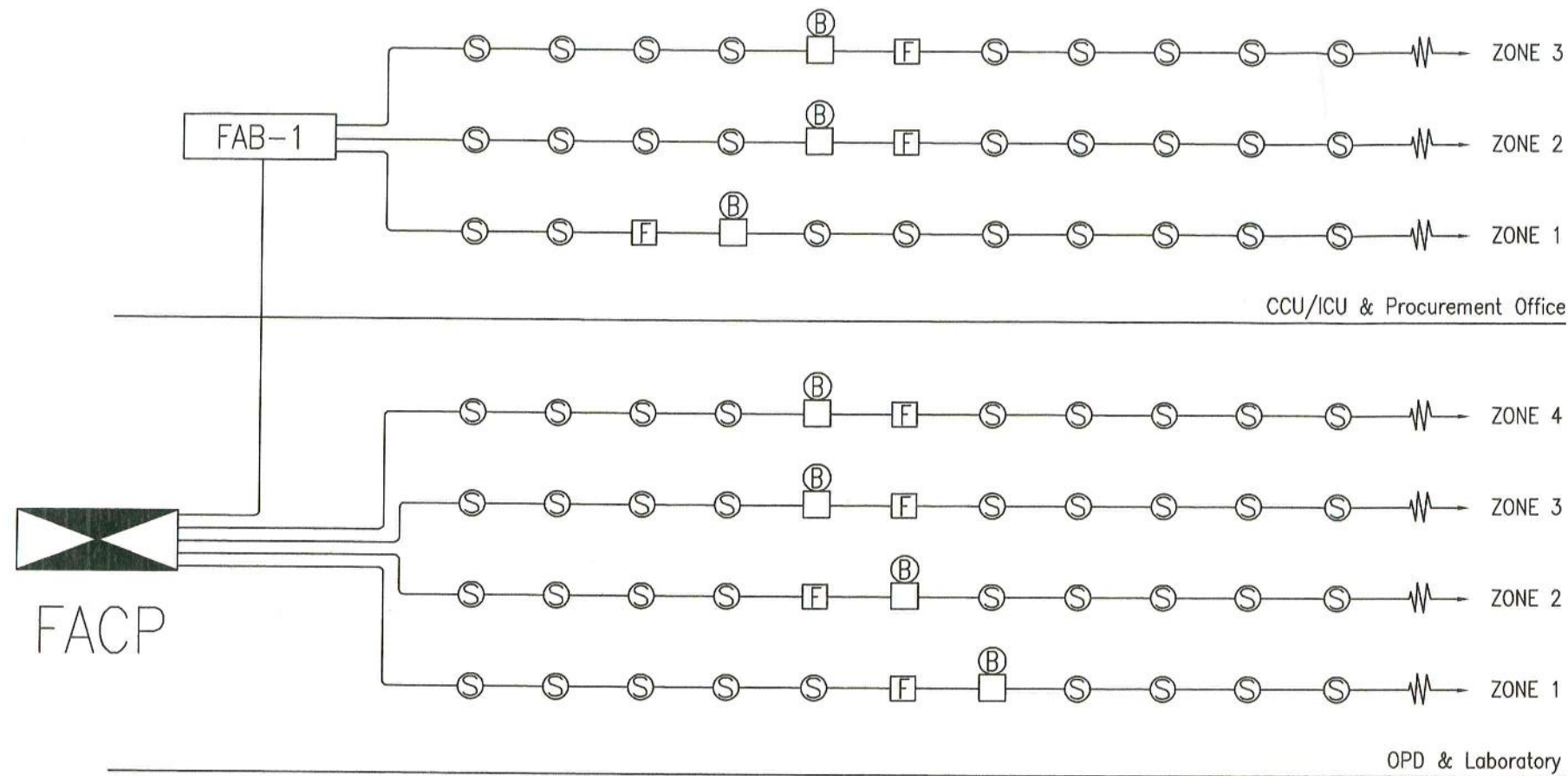


SCHEDULE :

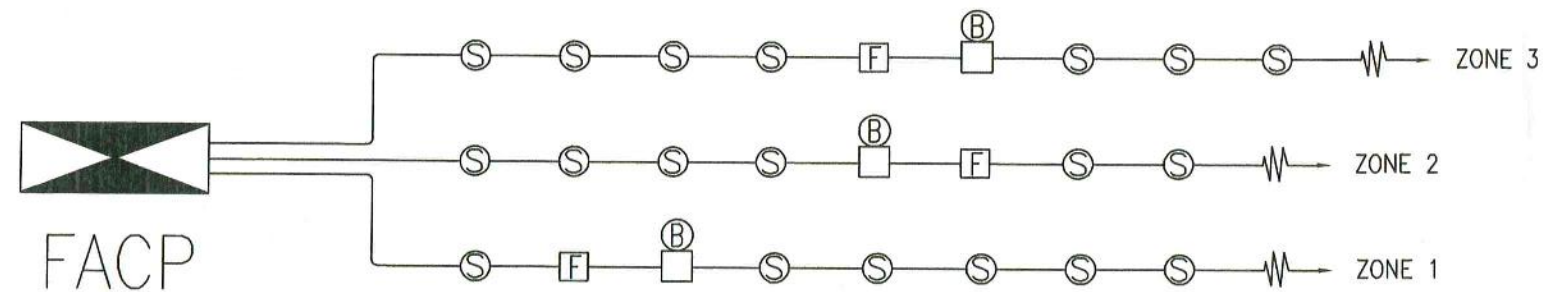
PIPE SIZE	ANGLE BAR	ROUND BAR	EXP. SHIELD
100 MM.	4 MM. THK. X 32 MM. X 32 MM.	10 MM.	10 MM.
125 MM.	4 MM. THK. X 38 MM. X 38 MM.	13 MM.	13 MM.
150 MM.	4 MM. THK. X 38 MM. X 38 MM.	13 MM.	13 MM.
200 MM.	5 MM. THK. X 38 MM. X 38 MM.	13 MM.	13 MM.

RISER SWAY BRACE DETAIL
SCALE N T S

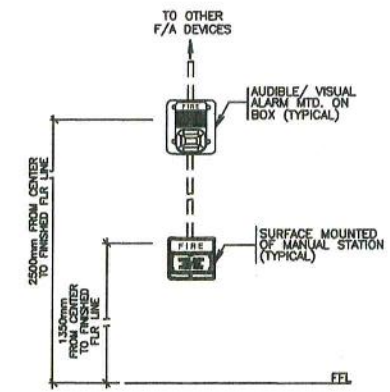




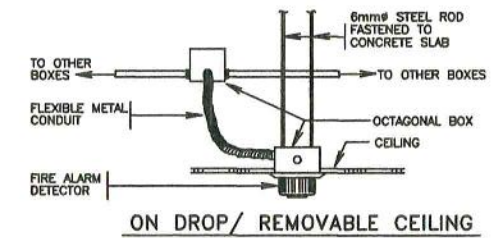
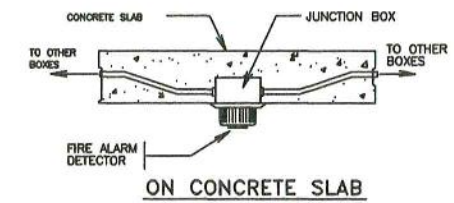
FIRE ALARM RISER DIAGRAM (CCU/CIU, LABORATORY AND OPD)
SCALE N T S



FIRE ALARM RISER DIAGRAM (MEDICAL AND ISOLATION WARD)
SCALE N T S



FIRE ALARM BELL DETAIL
SCALE N T S



FIRE ALARM SMOKE DETECTOR DETAIL
SCALE N T S

LEGEND:

SYMBOL	DESCRIPTION
S	CONVENTIONAL SMOKE DETECTOR
B	CONVENTIONAL HEAT DETECTOR
F	FIRE ALARM CONTROL PANEL
B	FIRE ALARM BELL
F	FIRE ALARM MANUAL STATION
F	FIRE ALARM WIRING, DENOTES 2-1.25mmsq. WIRING IN 20mm# IMC



REPUBLIC OF THE PHILIPPINES
PROVINCE OF BATAAN
BATAAN GENERAL HOSPITAL
BALANGA CITY, BATAAN
ENGINEERING AND FACILITIES

PROJECT TITLE:

FIRE PROTECTION SYSTEM

PREPARED BY:

EDWIN PANLAQUI
ENGINEER III

CHECKED BY:

JOHN DARREL M. SANTOS
ENGINEER IV

RECOMMENDING APPROVAL:

MYRNA V. MAGAT

APPROVED BY:

DR. GLORY V. BALTAZAR

SHEET NO:

FP
10